



I-20 Vegetation Management Project Update

May 22, 2024

Agenda:

**Purpose of Vegetation Mgmt
Project**

Project & Landscaping Update

Q&A



Highway Safety and Trees: The Delicate Balance

The Dilemma:

While valued as a community asset due to their beauty and environmental benefits, trees are the single most commonly struck objects in serious roadside crashes. Vehicle collisions with trees account for more than 4,000 fatalities and 100,000 injuries each year. Efforts by highway agencies to remove trees are often met with strenuous objections by local residents, concerned with preserving our natural resources and the aesthetics they bring to our surroundings.

Solution:

In 2019, GDOT implemented a vegetation pruning and removal program to sensitively extract obstructions such as tree and bush overgrowth on state right of ways. The reduction of trees and pruning would safeguard motorists who leave the roadway in emergency situations, lower the probability of hitting fixed objects; ensure visibility of warning, information, or instructional signage, and remove overhanging/leaning trees that would fall during inclement weather.





Trees don't only fall during storms



Tree on I-20
fell during
the night
without
notice.
1/30/24



Not only does a tree falling cause accidents...



But a possibility of multiple accidents !!!



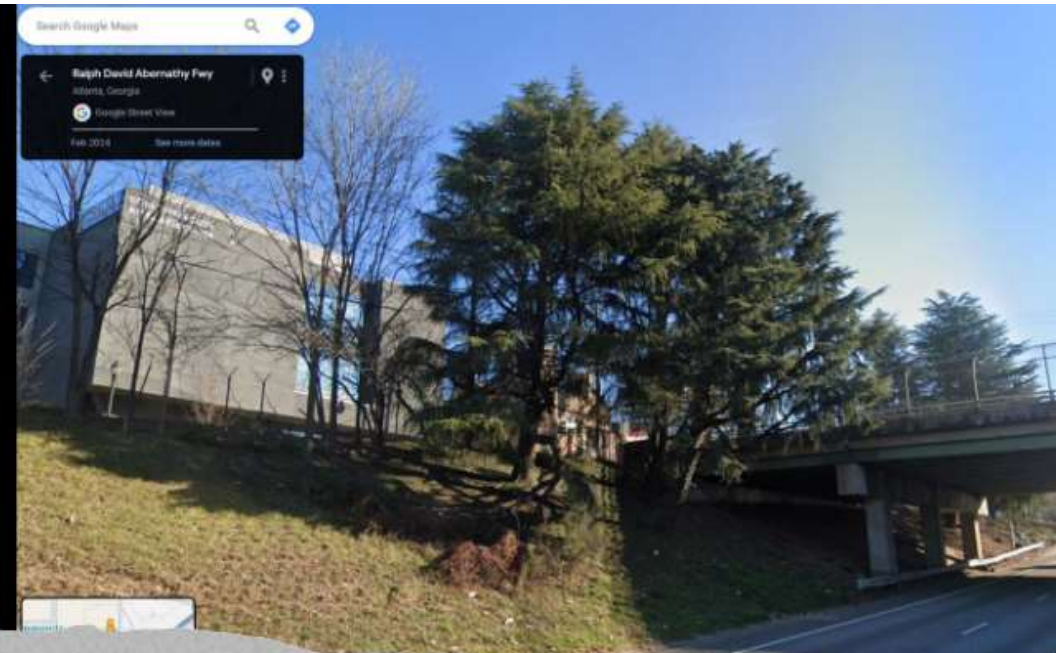
- Traffic Delays
- Fatal Crashes
- Power Outages due to Utility Conflicts





Weight of the leaning trees toward interstate.

- When calculating the weight of a tree, the weight of its leaves is the third main variable.
- Along with the slope the tree is on
- And Diameter of the tree
- Disease or dying trees play a factor as well.



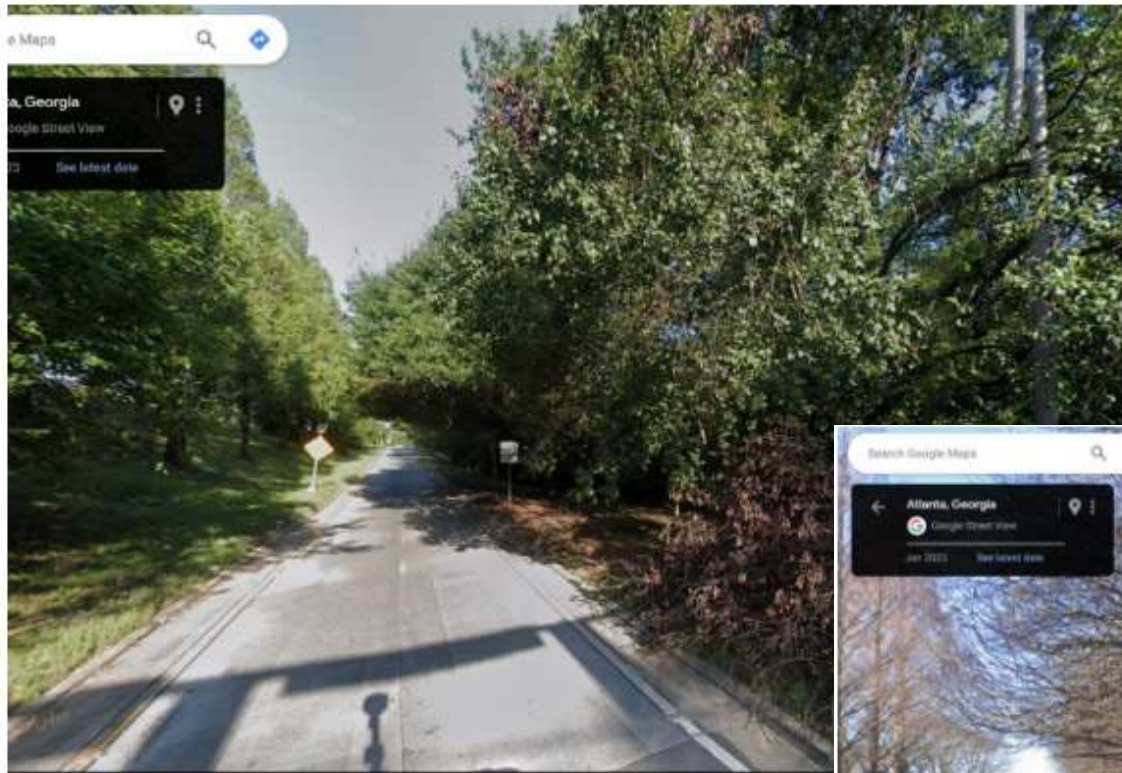
Leaning Trees are a Hazard if they are not identified.

****Above shows I-20 at Lee St bridge***



Another Example of Leaning Trees

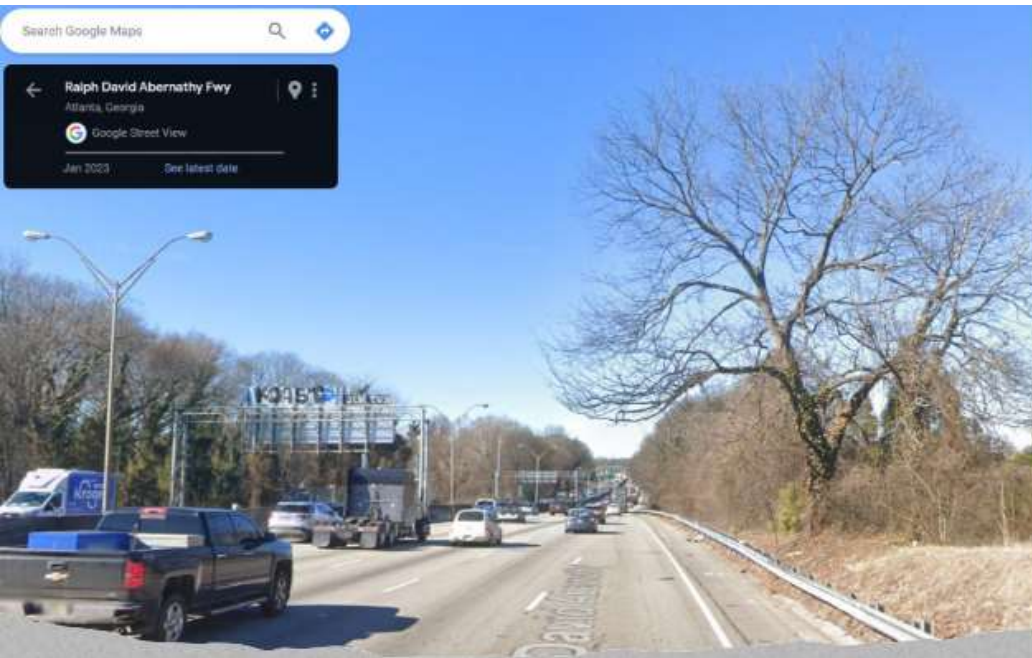
* Notice the leaning pine and oaks growing over roadway. These trees will cover all 4 lanes possibly Eastbound traffic also.



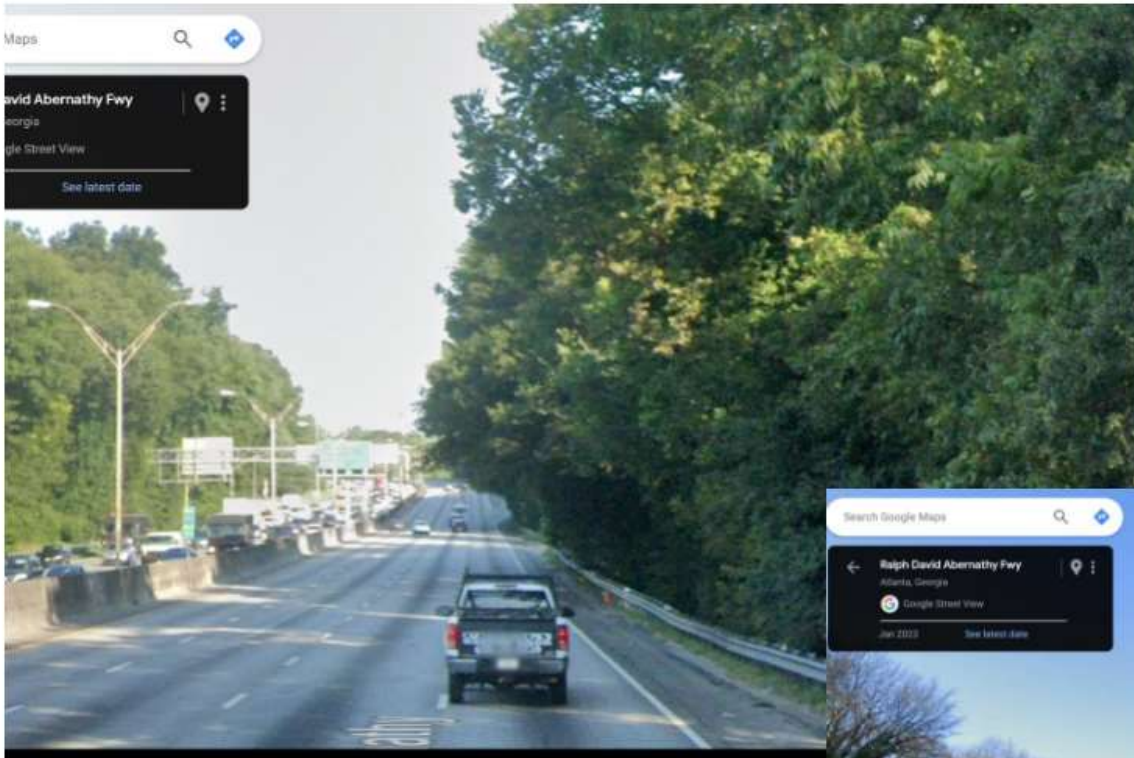
When Calculating the Weight of a Tree, the Tree Canopy (the weight of its leaves) becomes the 3rd main variable.

**** I-20 On Ramp at Lowery St.***



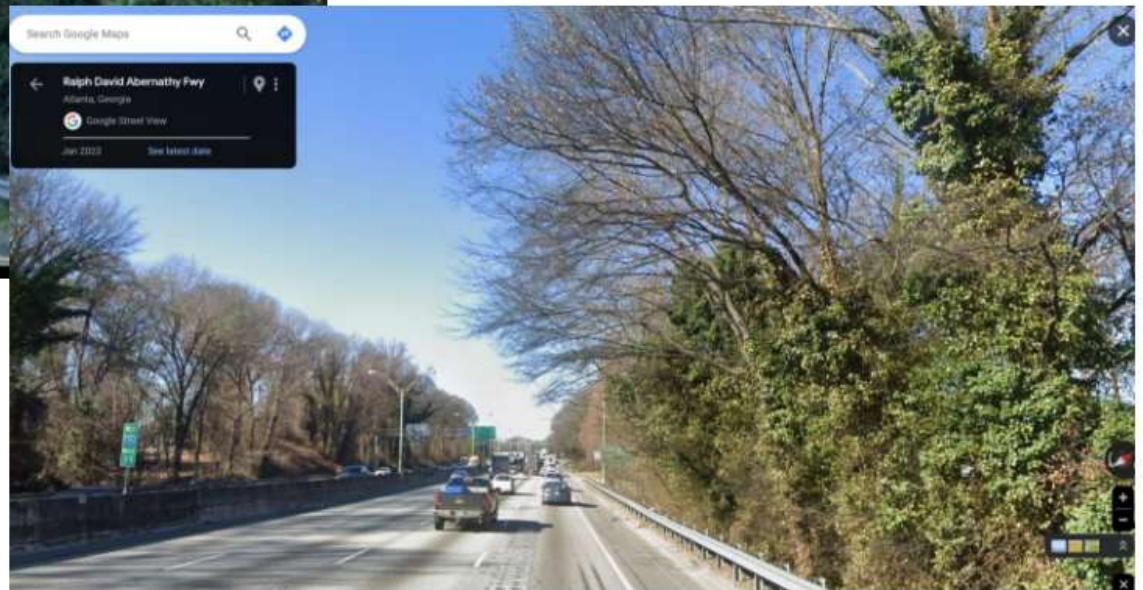


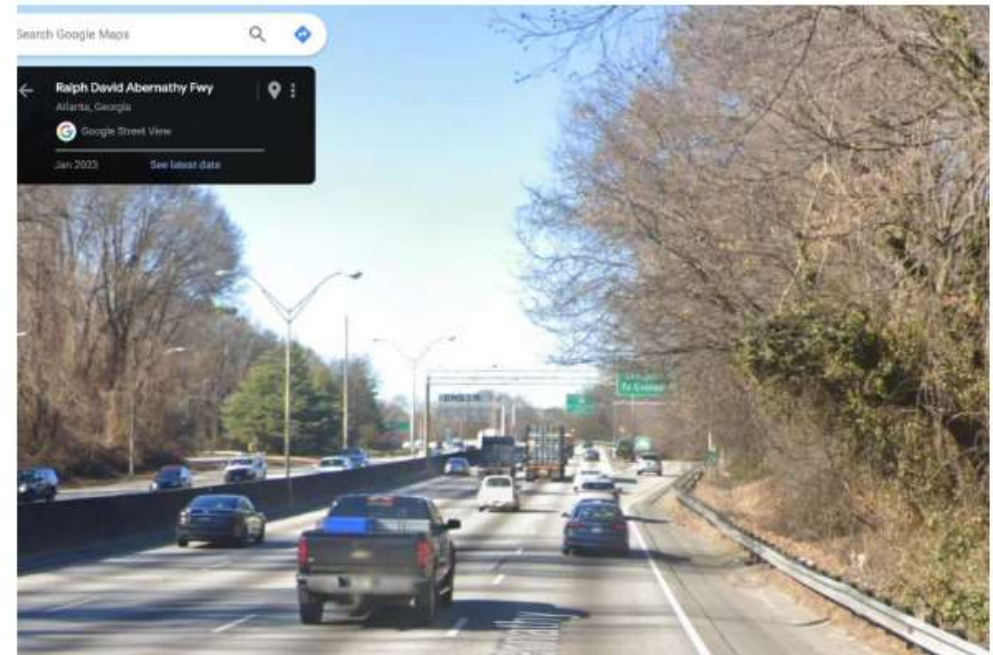
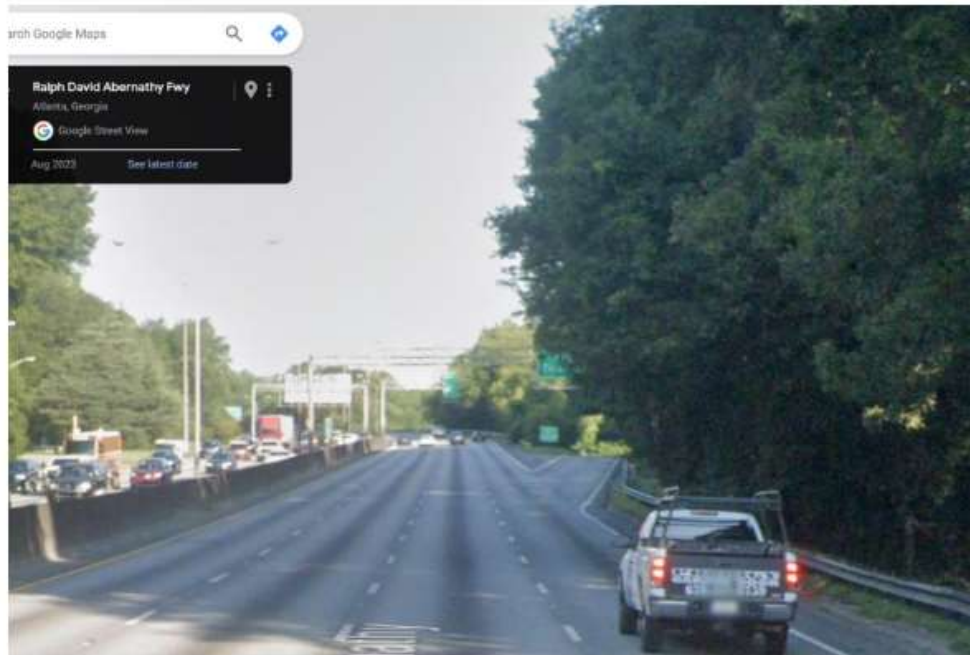
Winter vs Summer



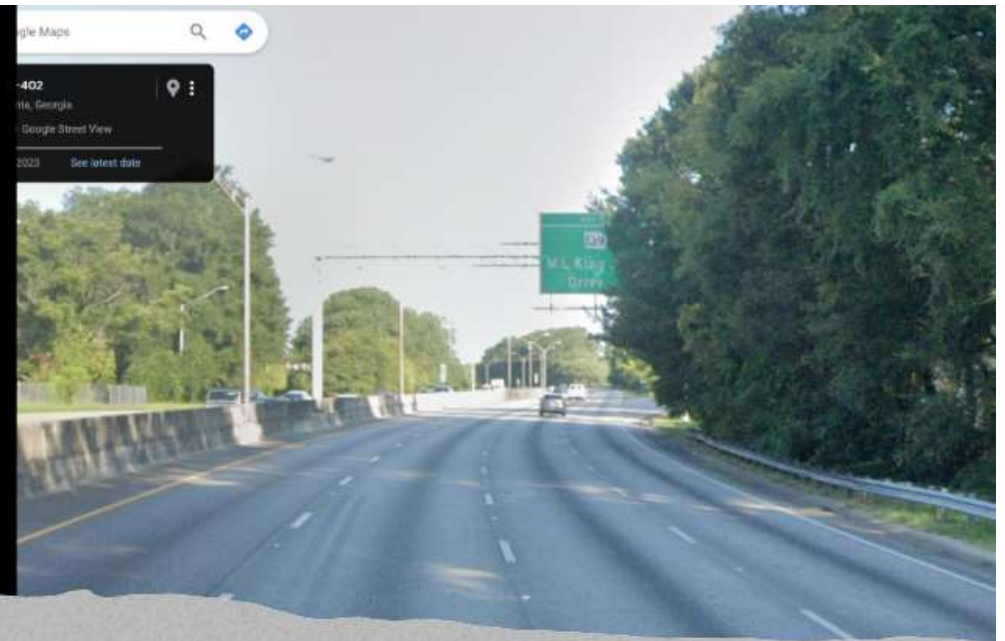
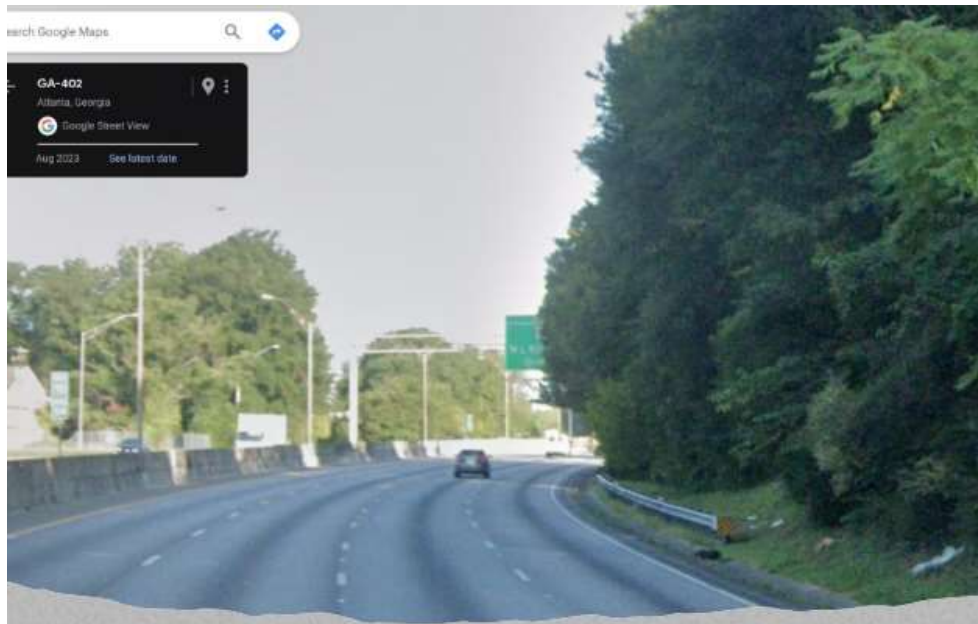
Overgrown Trees can cause Sign Visibility Issues

Tree vegetation can block sign visibility





Sign visibility summer versus winter



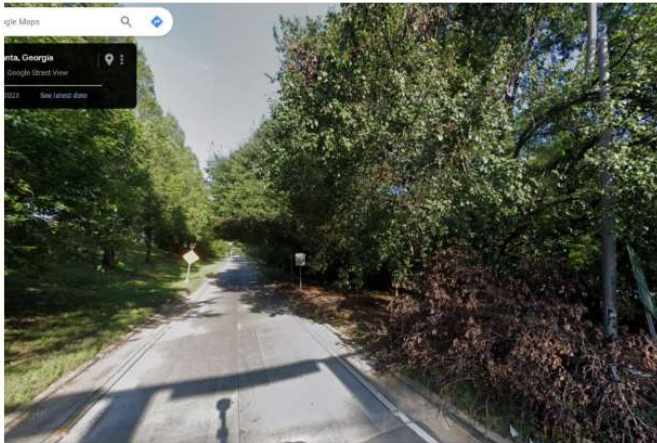
Another sight distance
for overhead signs

View from the Exit ramp and Park St of leaning trees due to utility power line cutting



Vegetation Mgmt Projects

- Assess and Remove Leaning Trees, Overgrowth, Brush along Interstate Mainline & Ramps
- Establish a Clear Zone within 30 ft of the roadway shoulder and trim tree overhang depending on Tree Canopy.
- Retain existing Landscaping at interchanges.



Landscaping Update



I-20 at Lee St,
Aug 2017



I-20 at Lee St,
May 2022

Interchange Landscaping is a **Partnership**
between GDOT, Local Govt, & CIDs

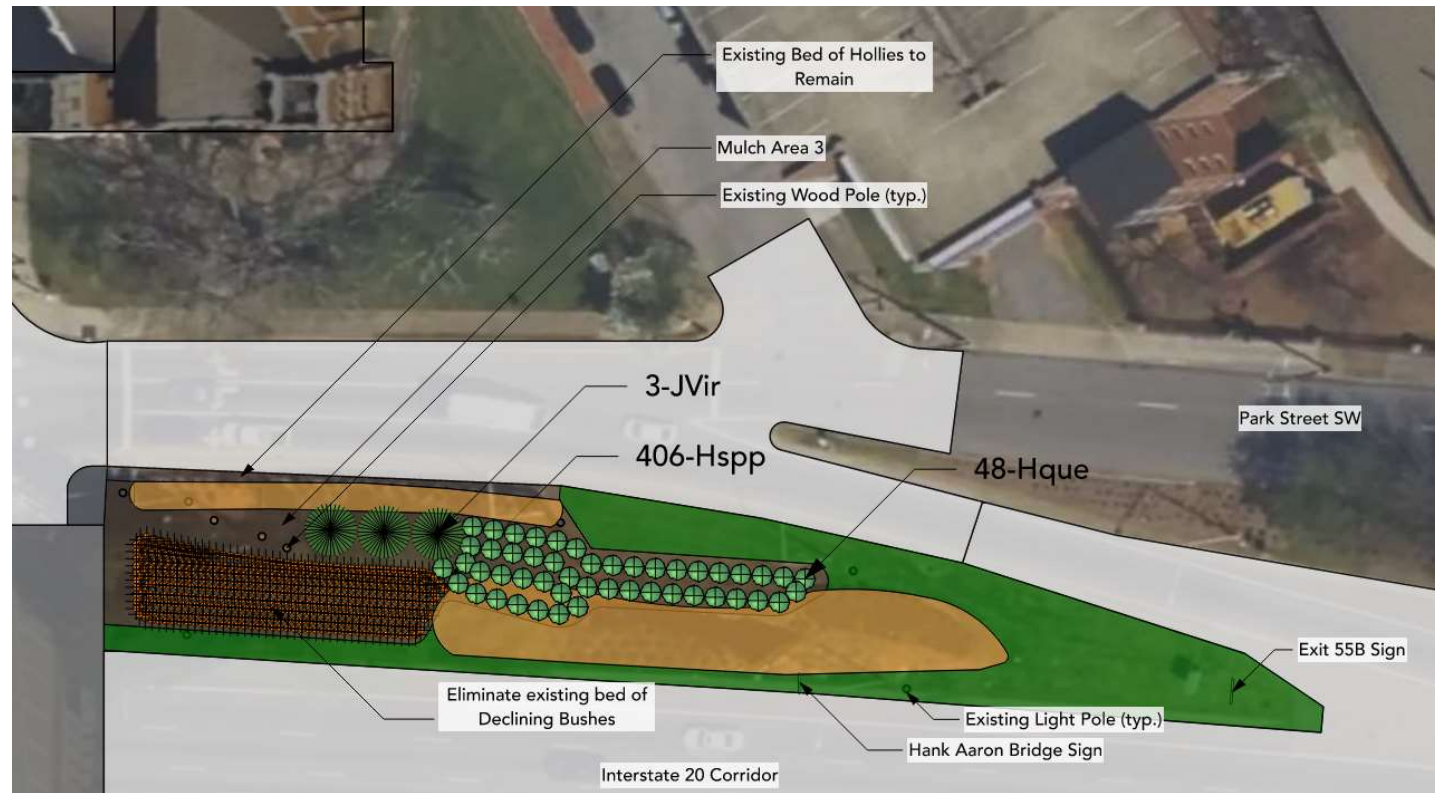
Landscaping Update: Type of Species

- Eastern Red Cedar (Juniper) Tree
- Eastern Redbud Tree



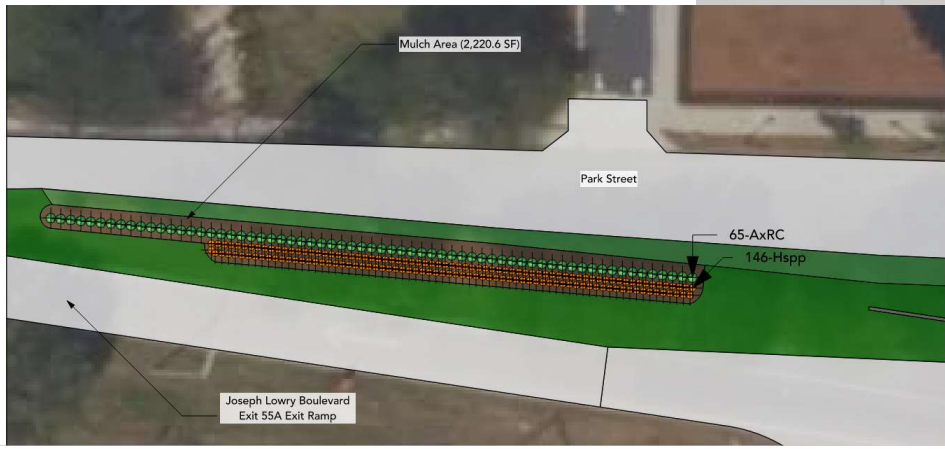
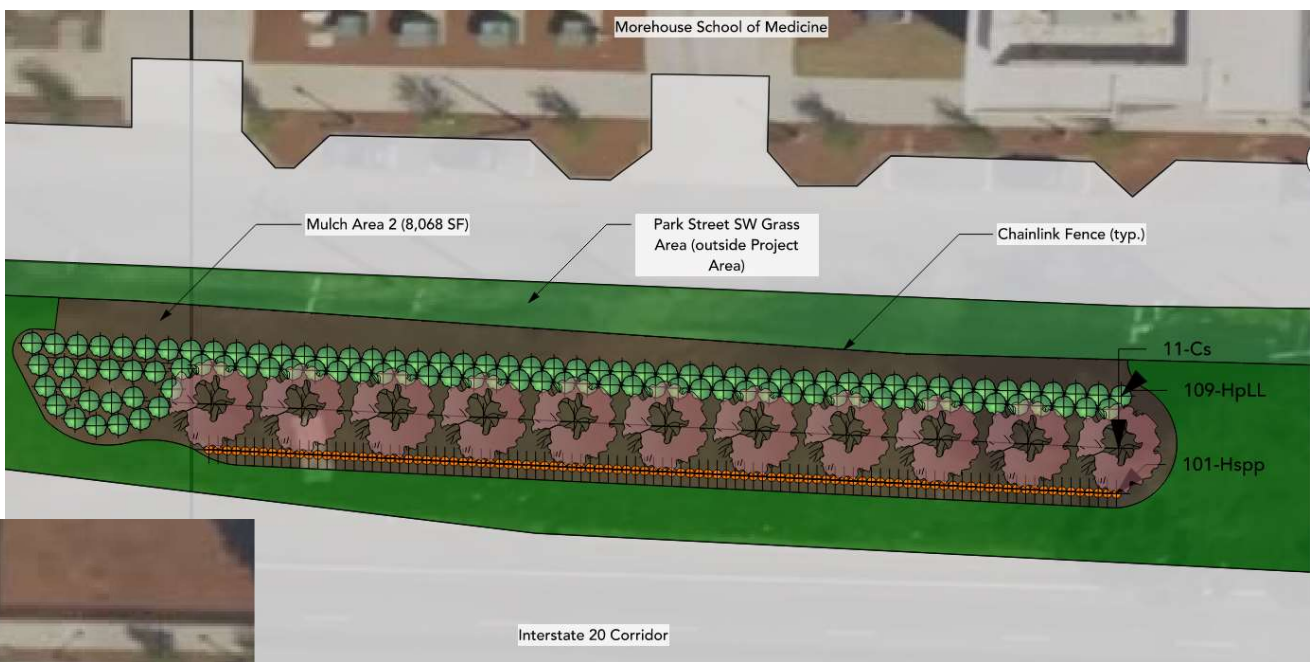
Landscaping Update: I-20 at Lucille & Lowery

- Pre-existing Landscaping Plan to be Restored by GDOT in coordination with West End CID on new design
- DRAFT Design to be finalized with West End CID



Landscaping Update: I-20 at Lucille & Lowery

- Pre-existing Landscaping Plan to be Restored by GDOT in coordination with West End CID on new design
- DRAFT Design to be finalized with West End CID



Landscaping Update: I-20 Mainline

- Heavy Bushes, Junipers and other Fast Growing Trees will be Placed as Vegetative Barrier
- Area will be mulched and fenced off



Landscaping Update: I-20 at Langhorn

- East Red Cedar Juniper Trees, East Redbud Trees, shrubs and perenniels will be Placed as low maintenance landscaping





Project Schedule

- **Vegetation Mgmt Activities to be completed by June 2024**
- **Landscaping Activities at Langhorn and Mainline I-20 will begin in mid June 2024**
- **Landscaping Activities at Lee St/Lowery St just finished Design coordination with Advertisement for bids to begin in June 2024. Construction likely to begin in July 2024.**
- **Investigating Other Impacts along I-20 corridor (including Sensory)**

Other Questions?



Other Questions?

Paul DeNard, PE

District Engineer

District 7, Metro Atlanta

Office: 770-216-3890

pdenard@dot.ga.gov

Justin Vaughn

District Contracts Manager

Office: 770-216-3847

jvaughn@dot.ga.gov

Chris Robinson

Area Manager

Area 1, City of Atlanta, DeKalb,
Rockdale

Office: 770-216-3810

ChrRobinson@dot.ga.gov



@GDOTMetroATL



@GDOTATL



@gadeptoftrans

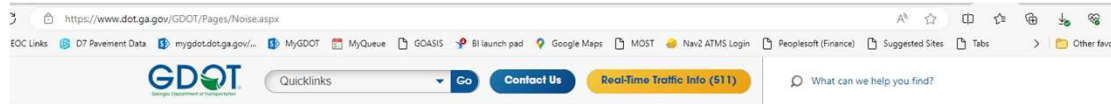
Q & A

What about noise barriers?

GDOT is limited to Federal and State Policy for noise barrier installation.

Please visit the website:

<https://www.dot.ga.gov/GDOT/Pages/Noise.aspx>



Noise

Georgia DOT measures potential noise impacts to residences, businesses, and other properties adjacent to the interstate. Residences and businesses that would realize a noise reduction of at least five decibels are referred to as "benefited receptors" and given the opportunity to vote either in favor or against the installation of noise barriers through a balloting process administered by Georgia DOT.



Noise Barrier Overview



Leaning trees on I- 20 MP 71.8

